

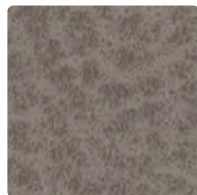


**ALLERMUIR
ESSENTIALS**

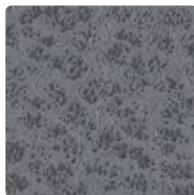
**MAYER
FABRICS**
+
Allermuir



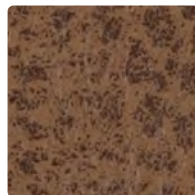
EXPLORER
EX-027 Bone



EX-000
Pebble



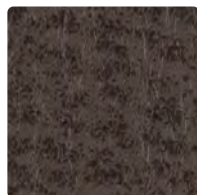
EX-036
Quarry



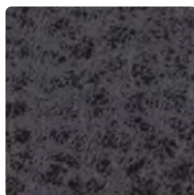
EX-019
Saddle



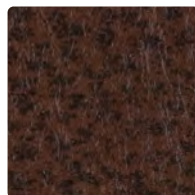
EX-003
Jade



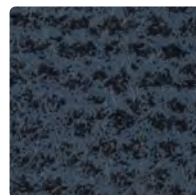
EX-010
Granite



EX-016
Carbon



EX-040
Whiskey



EX-014
Indigo



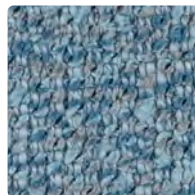
EDITOR
WC920-017 Oatmeal



WC920-001
Blush



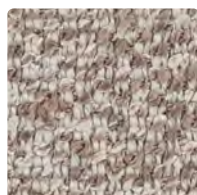
WC920-002
Topaz



WC920-004
Water



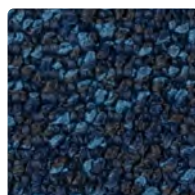
WC920-006
Mineral



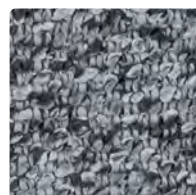
WC920-027
Pumice



WC920-003
Evergreen



WC920-014
ink



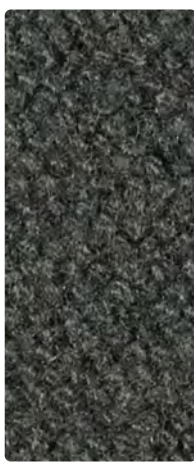
WC920-016
Slate



WOOL BOUCLE
LC909-007 Sea Salt



LC909-010
Morel



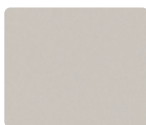
LC909-016
Charcoal



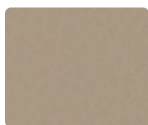
LC909-004
Indigo



LC909-005
Red Violet



ULTRAHIDE
UH-017 Shell



ULTRAHIDE
UH-037 Dune



ULTRAHIDE
UH-010 Gravel



ULTRAHIDE
UH-019 Terra



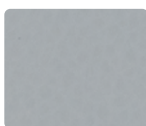
ULTRAHIDE
UH-011 Rosy



ULTRAHIDE
UH-001 Chili



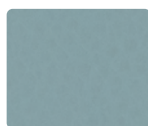
ULTRAHIDE
UH-005 Wine



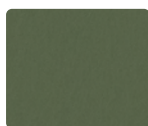
ULTRAHIDE
UH-036 Mineral



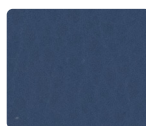
ULTRAHIDE
UH-026 Cobblestone



ULTRAHIDE
UH-024 Opal



ULTRAHIDE
UH-013 Kelp



ULTRAHIDE
UH-044 Denim



ULTRAHIDE
UH-004 Naval

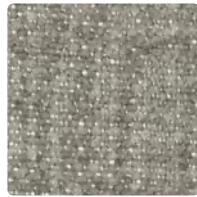


ULTRAHIDE
UH-016 Charcoal

Additional colors are available. Please refer to the Mayer Fabrics website.



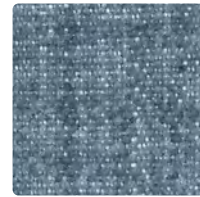
HAVEN
472-007 Cocoon



472-037
Gravel



472-003
Seafoam



472-014
Iceberg



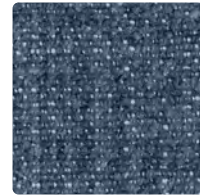
472-026
Iron



472-010
Shiitake



472-013
Peridot



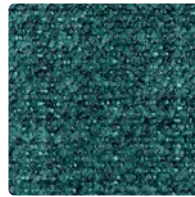
472-034
Denim



472-011
Ruby



472-020
Bark



472-033
Peacock



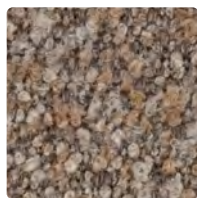
472-044
Navy



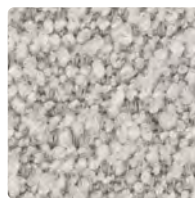
472-036
Raven



UTOPIA
473-017 Oats



473-037
Fossil



473-007
Dove



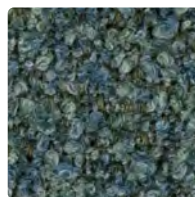
473-024
Capri



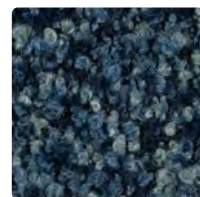
473-016
Fog



473-009
Autumn



473-003
Sprout



473-034
Rainstorm



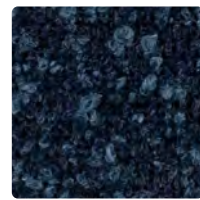
473-026
Smoke



473-001
Flare



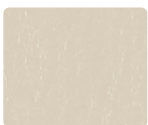
473-013
Spruce



473-004
Twilight



473-046
Cinder



CARESSA
CA-127 Bone



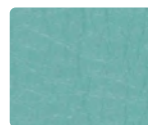
CARESSA
CA-076 Alluminum



CARESSA
CA-060 Caramel



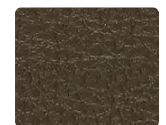
CARESSA
CA-123 Parsley



CARESSA
CA-084 Aqua



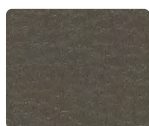
CARESSA
CA-114 Pacific



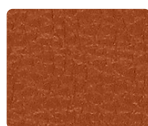
CARESSA
CA-040 Java



CARESSA
CA-107 Pebble



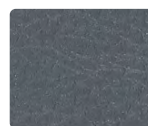
CARESSA
CA-026 Granite



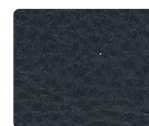
CARESSA
CA-019 Bittersweet



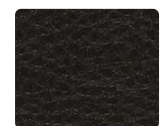
CARESSA
CA-001 Ruby



CARESSA
CA-044 Cadet



CARESSA
CA-004 Navy

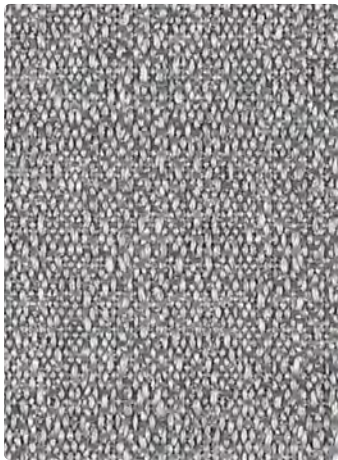


CARESSA
CA-006 Black

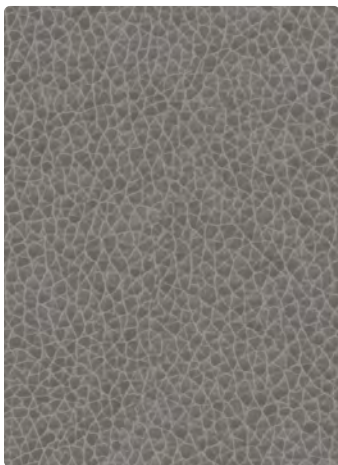
Additional colors are available. Please refer to the Mayer Fabrics website.



FEDORA/GATSBY
621-056/WC978-056 Dew



CONTINUUM 10
422-036 Iron



PALERMO II
PM-016 Storm



621-046/WC978-046
Light Grey



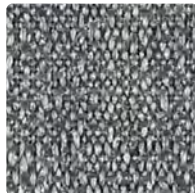
621-036/WC978-036
Dapper



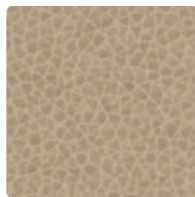
621-017/WC978-017
Fawn



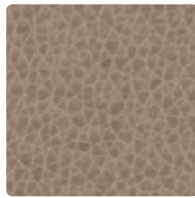
422-027
Stone



422-016
Charcoal



PM-027
Buff



PM-030
Clove



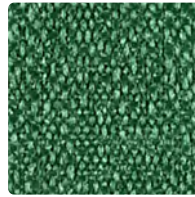
621-033/WC978-033
Opal



621-002/WC978-002
Topaz



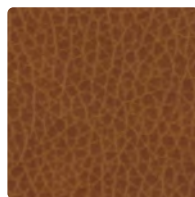
621-003/WC978-003
Cactus



422-043
Bottle



422-008
Beet



PM-019
Tawny



PM-020
Otter



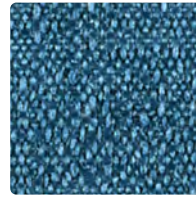
621-053/WC978-053
Aegean



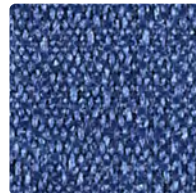
621-014/WC978-014
Indigo



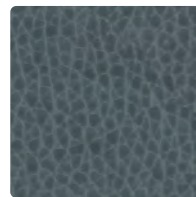
621-004/WC978-004
Midnight



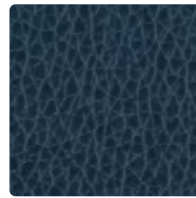
422-024
Caribbean



422-004
Indigo



PM-034
River Rock



PM-004
Sapphire



621-016/WC978-016
Charcoal



621-008/WC978-008
Plum



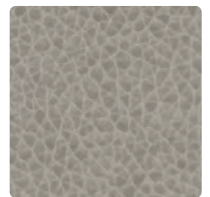
621-006/WC978-006
Bitumen



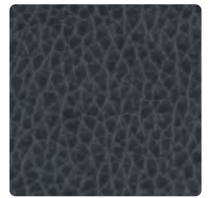
422-000
Espresso



422-006
Onyx



PM-036
Fossil



PM-006
Ebony

Additional colors are available. Please refer to the Mayer Fabrics website.

TECHNICAL INFORMATION

Pattern 54"	Content and Backing	Certifications	Weight/ Linear Yd.	Pattern Repeat	Finish	Abrasion Wyzenbeek	Light- Fastness	Flammability	Cleaning Code
CARESSA	80% Vinyl - Phthalate Free face, 20% Polyester backing	GREENGUARD Gold	29 oz.	None	Soil & Stain Resistant Top Coat with Ink Resistant Technology	650,000^ Double Rubs	1000 hours	Cal. 117-2013 NFPA 260/UFAC Class 1 FMVSS 302	BC, CFC
CONTINUUM10 Directional Multi-use+	100% Post-Consumer Recycled Polyester Backing: Latex	GREENGUARD Gold	15 oz.	0.50" H, 0.59" V	Stain Repellent - PFOA & PFOS Free	130,000^ Double Rubs	40 hours	Cal. 117-2013 NFPA 260/UFAC Class 1 ASTM E84 (Unadhered) Class 1 or A	WS
EDITOR Directional	100% Polyester Backing: Crypton® Moisture Barrier	GREENGUARD Gold	24.39 oz.	Random Match	Crypton®	100,000^ Double Rubs	40 hours	Cal. 117-2013 NFPA 260/UFAC Class 1	W, C, BC
EXPLORER	70% Vinyl - Phthalate Free face, 30% Polyester backing	GREENGUARD Gold	32 oz.	None	Soil & Stain Resistant Top Coat	250,000^ Double Rubs	300 hours	Cal. 117-2013 NFPA 260/UFAC Class 1	WS, BC, CFC
FEDORA Directional Multi-use+	100% Polyester Backing: Polyester	GREENGUARD Gold	17.2 oz.	None	Stain Repellent - PFAS Free	100,000^ Double Rubs	40 hours	Cal. 117-2013 NFPA 260/UFAC Class 1 ASTM E84 (Unadhered) Class 1 or A	W
GATSBY Directional	100% Polyester Backing: Crypton® Moisture Barrier	GREENGUARD Gold	24.3 oz.	None	Crypton®	100,000^ Double Rubs	40 hours	Cal. 117-2013 NFPA 260/UFAC Class 1	W, C, BC
HAVEN Directional	92% Polyester, 6% Polyurethane, 2% Silicone Backing: Fluid Barrier (Supreen) Polyurethane	GREENGUARD Gold	22 oz.	Non- Matching	Supreen (Silicone) PFAS Free	100,000^ Double Rubs	40 hours	Cal. 117-2013 NFPA 260/UFAC Class 1	WS, BC
PALERMO II	45% Polyurethane Polycarbonate - PVC Free face, 55% Polyester backing	GREENGUARD Gold	25.4 oz.	None	WRITE AWAY™ - Soil & Stain Resistant Top Coat with Ink Resistant Technology	250,000^ Double Rubs	200 hours	Cal. 117-2013 NFPA 260/UFAC Class 1	WS, BC, CFC
ULTRAHIDE	21% Polyurethane Blend - PVC Free face, 32% Polyester/ 17% Cotton backing	GREENGUARD Gold	18.8 oz.	None	Soil & Stain Resistant Top Coat with Ink Resistant Technology	500,000^ Double Rubs	200 hours	Cal. 117-2013 NFPA 260/UFAC Class 1 ASTM E84 (Adhered) Class 1 or A	W, BC, CFC
UTOPIA Directional	88% Polyester, 7% Acrylic, 3% Polyurethane, 2% Silicone Backing: Fluid Barrier (Supreen) Polyurethane	GREENGUARD Gold	24.5 oz.	None	Supreen (Silicone) PFAS Free	100,000^ Double Rubs	40 hours	Cal. 117-2013 NFPA 260/UFAC Class 1	WS, BC
WOOL BOUCLE Directional	55% Nylon, 45% Wool Backing: Acrylic	GREENGUARD Gold	23 oz.	None	None	100,000^ Double Rubs	40 hours	Cal. 117-2013 NFPA 260/UFAC Class 1	WS

REDUCED ENVIRONMENTAL IMPACT

These products are GREENGUARD Gold Certified for low chemical and particle emissions to UL standard UL 2818 and may contribute to LEED certification.

CARE AND CLEANING INFORMATION




WS: Water/Solvent Cleaner IC: Inherently Cleanable CFC: Coated Fabrics Cleaning – Refer to Mayer website for complete cleaning info.
BC: Bleach Cleanable – 1 part bleach, 9 parts water = 10% bleach, 90% water solution. **Do not clean/disinfect fabric for longer than 10 minutes using the 10% bleach solution. Always rinse promptly with clean water after applying the bleach solution. Failure to do so will void any and all warranties.**

DYE TRANSFER DISCLAIMER

Certain clothing and accessory dyes (such as those used on denim jeans) may migrate to lighter colors. This phenomenon is increased by humidity and temperature and is irreversible. Mayer Fabrics will not assume responsibility for dye transfer caused by external contaminants. Please check compatibility when using this product in combination with painted or varnished surfaces.

ADDITIONAL INFORMATION

^Abrasion test results exceeding ACT Performance Guidelines are not an indicator of product lifespan. Multiple factors affect fabric durability and appearance retention.
+A multi-use fabric that can be used for upholstery, panels, wrapped walls, and acoustic.
Warranty: Please refer to the Mayer website for warranty information by pattern.
Custom Colors: All patterns can be custom colored. Minimum yardage applies.
Digital Swatch Card Color Matching: Due to color variations on different monitors and color printers, actual swatch colors may vary slightly. Please request a memo sample from Mayer Fabrics to ensure proper color representation.
Complete and current product information available at mayerfabrics.com.



These fabrics meet or exceed
these ACT performance guidelines.
*Certification Marks owned by ACT®

©2025
SENATORCDD MF0925